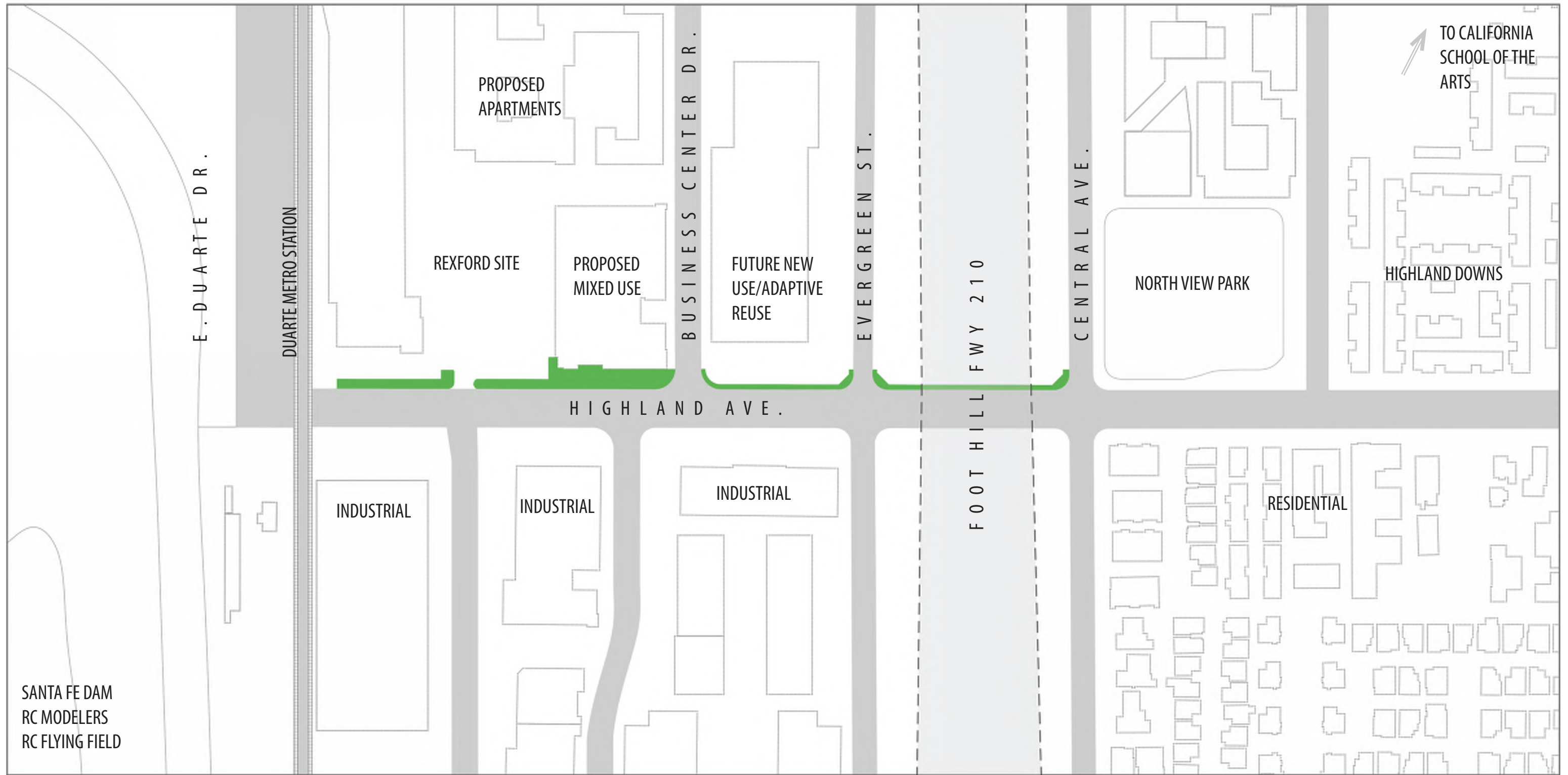




Highland Avenue Promenade - Duarte

site **design** studio inc

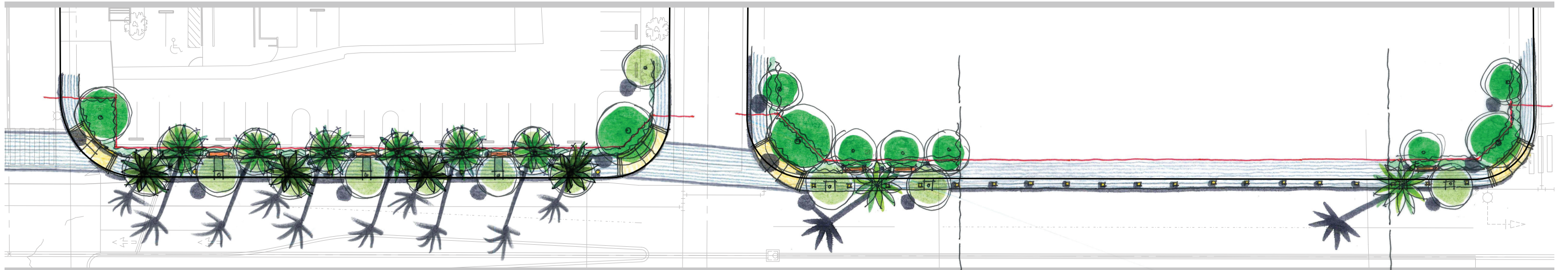
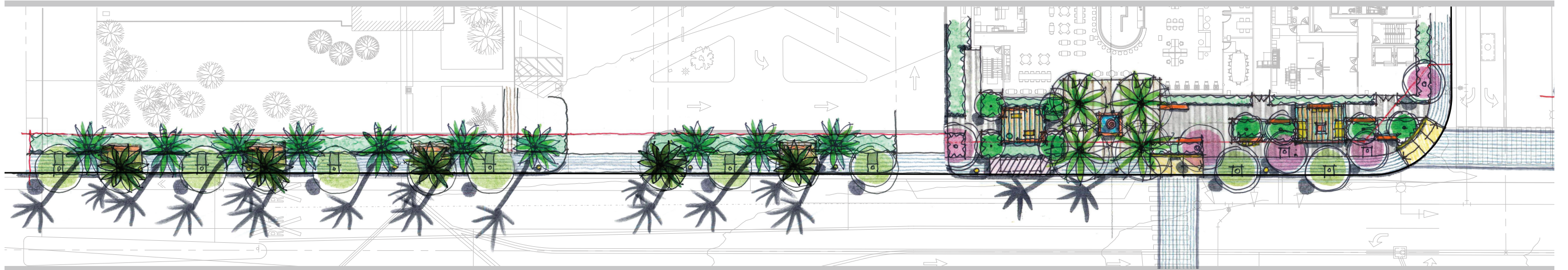
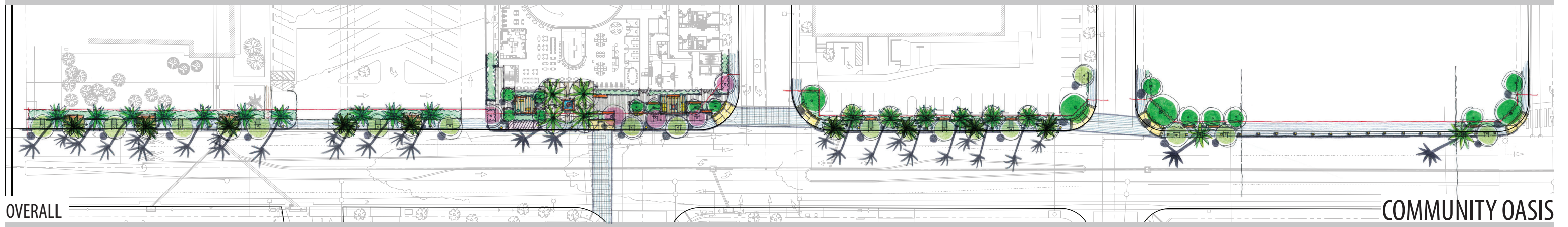


SITE CONTEXT



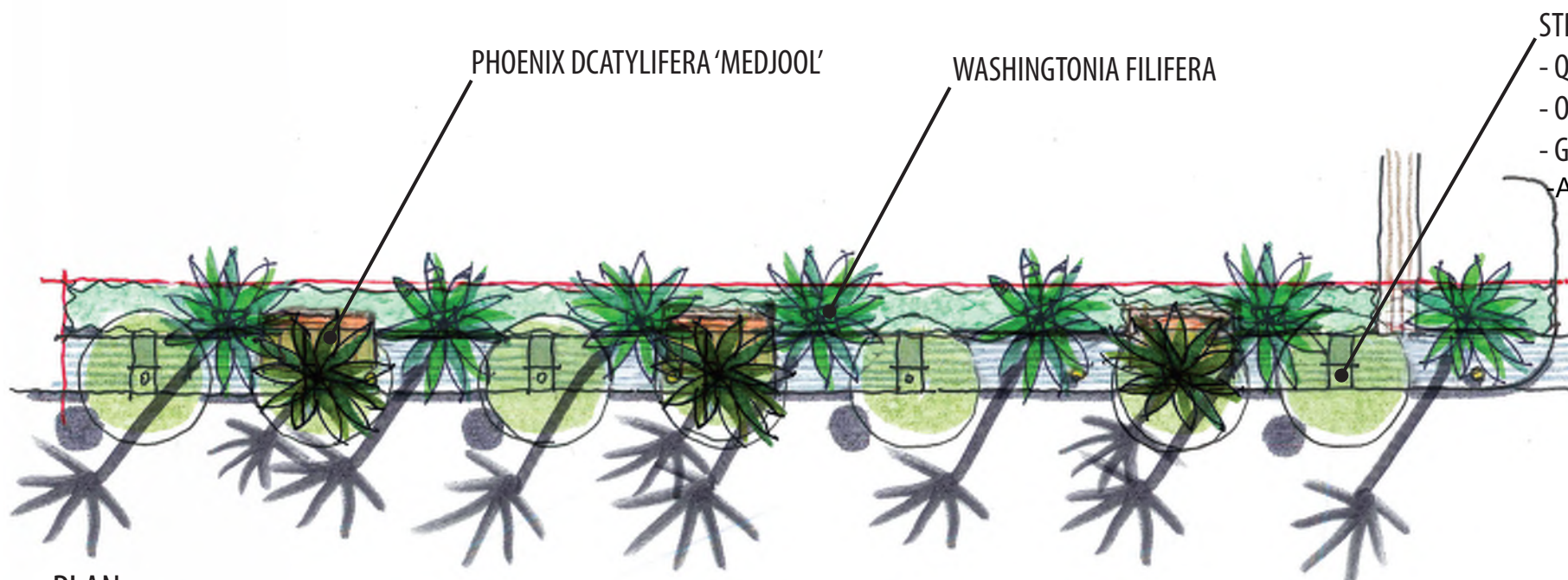
NORTH





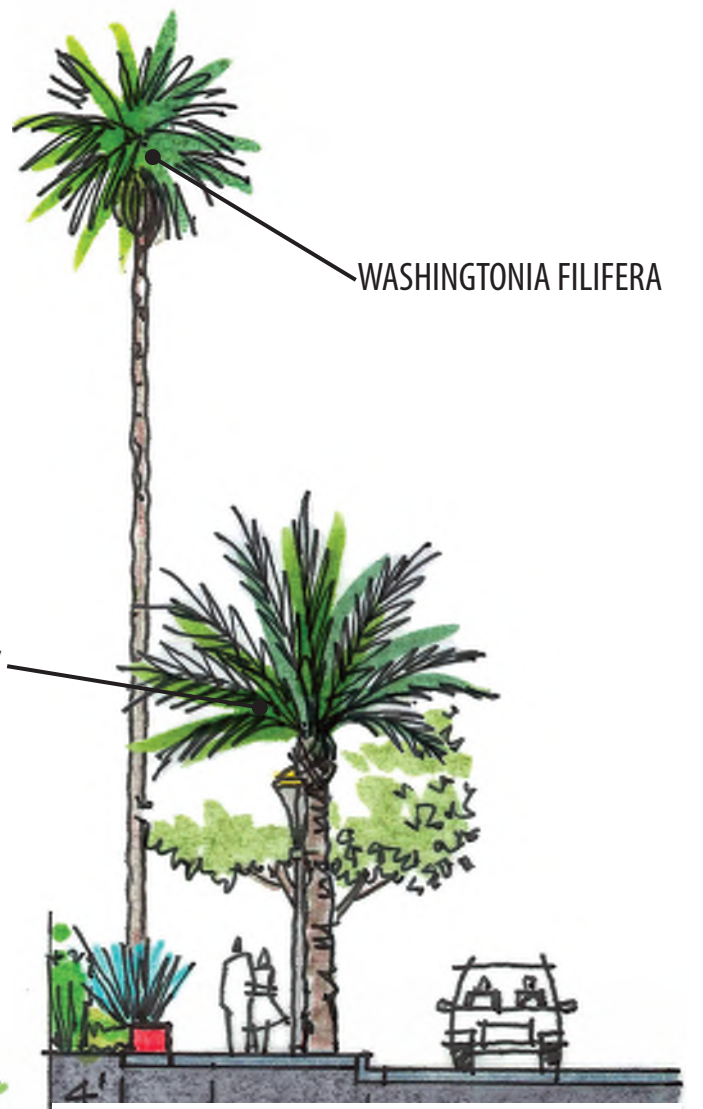
CONCEPTUAL PLAN



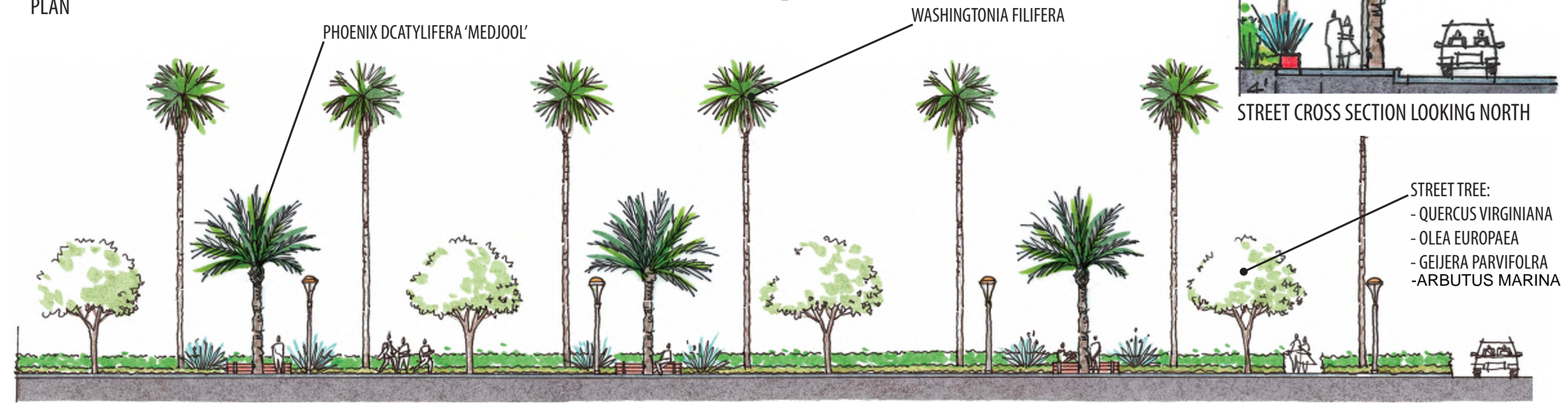


PLAN

- STREET TREE:
- QUERCUS VIRGINIANA
 - OLEA EUROPAEA
 - GEIJERA PARVIFOLRA
 - ARBUTUS MARINA



STREET CROSS SECTION LOOKING NORTH



HIGHLAND AVE ELEVATION

- STREET TREE:
- QUERCUS VIRGINIANA
 - OLEA EUROPAEA
 - GEIJERA PARVIFOLRA
 - ARBUTUS MARINA

TYPICAL STREETScape

HIGHLAND AVE. PROMENADE • THE CITY OF DUARTE • DUARTE, CA

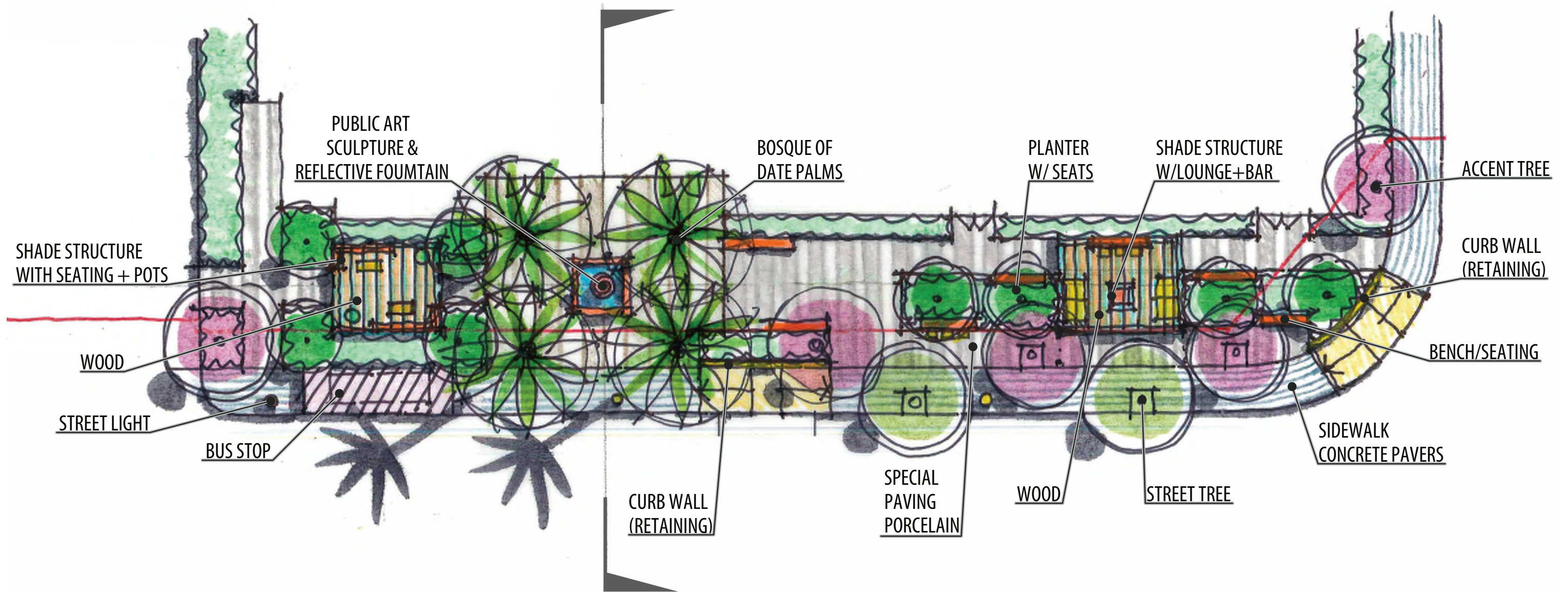


KEY MAP

JULY 2, 2024

LANDSCAPE ARCHITECTURE
180 East Main Street Suite 208, Tustin, CA 92780
714.426.0248 • msullivan@sitedesign-studio.





SEGMENT B - ENLARGEMENT PLAN

HIGHLAND AVE. PROMENADE • THE CITY OF DUARTE • DUARTE, CA

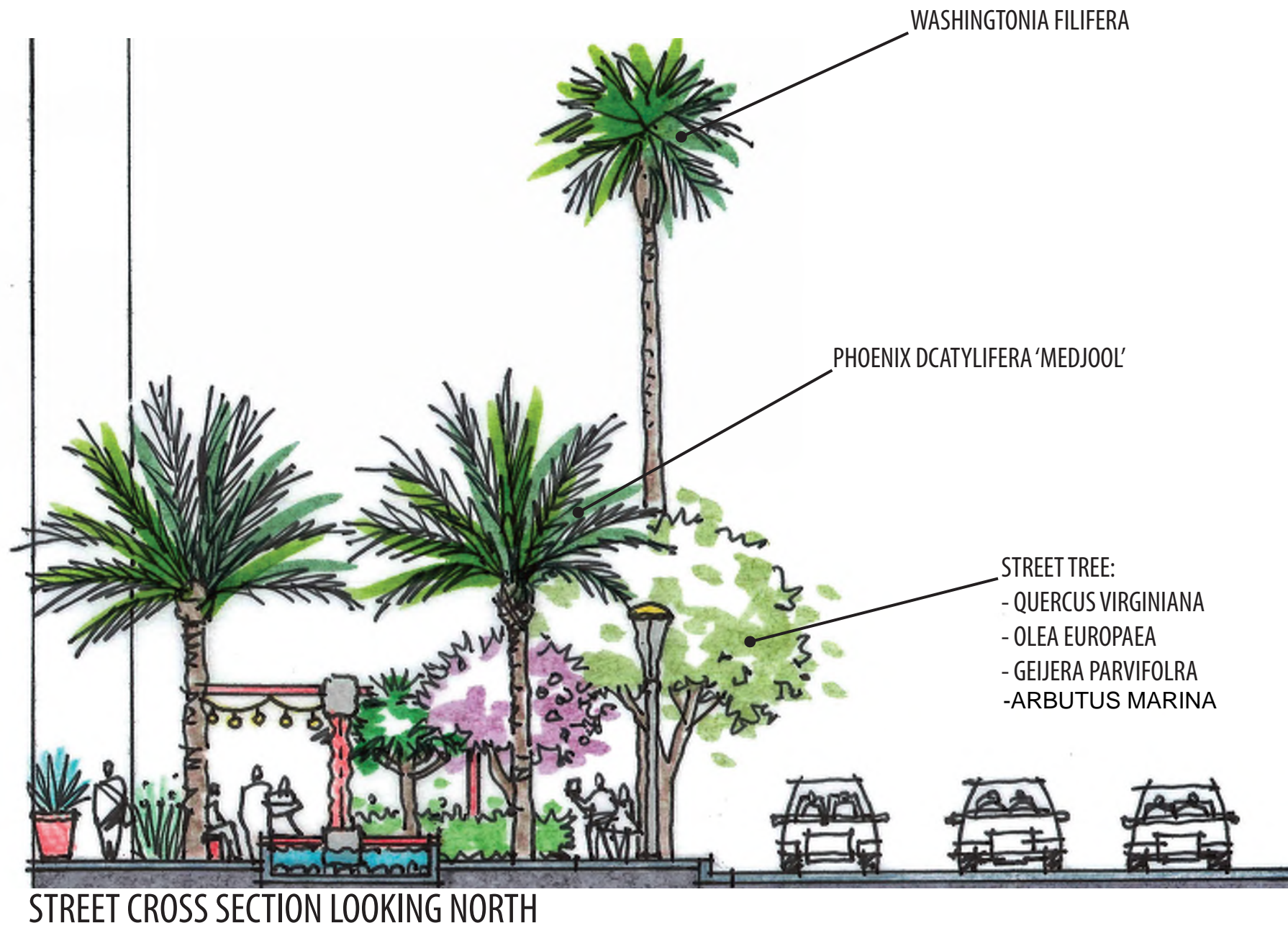
KEY MAP



JULY 2, 2024

LANDSCAPE ARCHITECTURE
180 East Main Street Suite 208, Tustin, CA 92780
714.426.0248 • msullivan@sitedesign-studio.





STREET CROSS SECTION LOOKING NORTH

SEGMENT B - CROSS SECTION

HIGHLAND AVE. PROMENADE • THE CITY OF DUARTE • DUARTE, CA



KEY MAP

JULY 2, 2024

LANDSCAPE ARCHITECTURE
180 East Main Street Suite 208, Tustin, CA 92780
714.426.0248 • msullivan@sitedesign-studio.





PHOENIX DACTYLIFERA 'MEDJOO'



WASHINGTONIA FILIFERA



GEIJERA PARVIFLORA



OLEA EUROPAEA 'FRUITLESS'



QUERCUS VIRGINIANA



ARBUTUS MARINA

TREE PALETTE

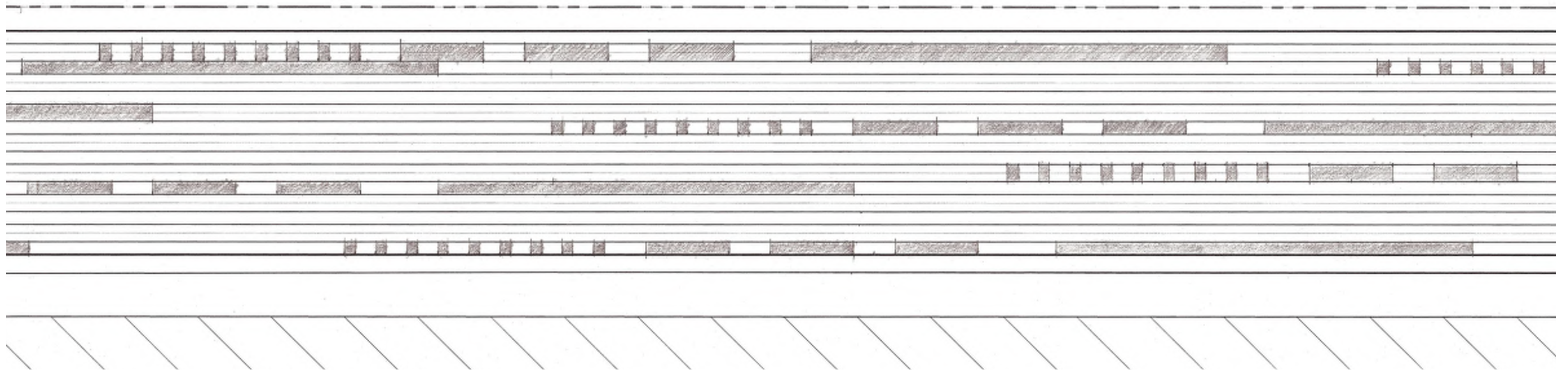
HIGHLAND AVE.

• THE CITY OF DUARTE • DUARTE, CA

JULY 2, 2024

LANDSCAPE ARCHITECTURE
180 East Main Street Suite 208, Tustin, CA 92780
714.426.0248 • msullivan@sitedesign-studio.





TYPICAL PAVING PATTERN

HIGHLAND AVE. PROMENADE • THE CITY OF DUARTE • DUARTE, CA

JULY 2, 2024

LANDSCAPE ARCHITECTURE
180 East Main Street Suite 208, Tustin, CA 92780
714.426.0248 • msullivan@sitedesign-studio.



